



ANNUAL REPORT 2022



LA CLÍNICA
DEL PUEBLO



1	WELCOME LETTER
2	HIGHLIGHTS
3	IMPACT
4	EVENTS
5	PATHWAYS TO HEALTH EQUITY
6	MEDIA
7	SERVING NEWCOMERS
8	PARTNERSHIPS
9	AWARDS
10	BOARD
11	FINANCIAL HIGHLIGHTS
12	DONORS
13	WAYS TO FURTHER ENGAGE

DEAR FRIENDS

La Clínica enjoyed many new beginnings in 2022, and we are proud and honored to share our stories, achievements, and results in this report. Without you, our partners, supporters, funders, clients, and stakeholders, we could not have been successful in taking one step closer to our 40th anniversary of building a healthier Latino community.

In 2022 we welcomed new leadership to our Board of Directors, and we have been hard at work setting the stage for our future strategic directions. We cannot talk about 2022 without recognizing the joy we felt when seeing each other face to face at our many in-person “firsts.” Our first PRIDE, our first all-staff retreat, our first patient groups, our first Board retreat – these all gave us hope that we can emerge from COVID keeping the best of what we’ve learned while recovering our togetherness.

For our community, 2022 was another difficult year. Even while making gains in COVID prevention and transmission, Latinx immigrants in our region experienced greater economic and housing instability, ongoing impact on mental health and rising needs for substance use services, and continuing lack of access to health insurance coverage and services in many areas within our region. The horrific politization of migrants and newcomers bused to our nations’ capital shone a very visible light on the significant challenges immigrant families face daily, particularly when immigration status is tenuous or unstable. At La Clínica, we know that achieving health and wellbeing in this environment requires more than a plan solely focused on an individual.

Our awareness of these issues informed many of our programs and new initiatives. One example of this revolves around our work with diabetes – a major condition affecting Latinos nationwide. In February, La Clínica was selected as one of nine entities in Maryland to participate in the MD CHRC Pathways to Health Equity initiative, which seeks to reduce health disparities and improve health outcomes. Our project focuses on diabetes disparities among Latinos in Prince George’s County, and includes comprehensive care, medical-legal partnerships, linkage to care and specialty services, public education campaigns, and community mobilization around health access. We worked with our patients and clients to elevate their voices and challenges in public hearings and brought together our academic and community partners to reflect on our knowledge, lessons learned, and gaps in our goals to achieve greater health equity.

Diabetes is only one area of focus for La Clinica, we are also known for our breadth and depth around HIV care and prevention, substance use and mental health, language access, women’s health, gender and LGBTQ-affirming care, chronic care management, and school-based health, among others. Our common thread is not an issue, it’s our community, and our commitment to health as a human right for immigrants and all people. We invite you to get to know us better through this report, and to continue to deepen your relationship with us and our work. On behalf of our Board of Directors and staff, thank you for being a part of our journey.



Catalina Sol
Executive Director



Edgar Jimenez
Board President

Catalina Sol
Executive Director

Edgar Jimenez
Board President

HIGHLIGHTS 2022



PRIDE Reunited

After a 3-year hiatus, La Clínica's staff, clients, and allies united for the Pride Parade in celebration of the Latinx LGBTQ+ community. Events like this allow us to deepen our trust in the community and successfully navigate individuals to our services. More than 2,012 individuals were navigated to services in 2022.

Integrating Telehealth into our line of work

We integrated telehealth as a permanent option for patients to access their health care needs. While a 2021 patient survey showed preference for in-person visits, many expressed telehealth visits were preferred to refill prescriptions and for convenience. These key insights resulted in new policies to best meet patient needs.



Are you a La Clínica del Pueblo patient?
Don't have time for an in-person appointment?
Need to speak with a healthcare provider today?

**NOW YOU CAN
SCHEDULE A
TELEHEALTH VISIT**



www.lcdp.org/portal



Identifying new ways to unlock
Diabetes
Essential care and
Alliances in the Latino community

VIRTUAL CONFERENCE



IDEA Conference

La Clínica's and Bridging the Gap: Reducing Disparities in Diabetes Care hosted the IDEA Conference focused on diabetes care transformation, sustainability strategies, and how strategic partnerships can improve the health system. The interactive platform allowed the audience and panelists to drive real time recommendations.

Women's Reproductive Health

When the Supreme Court struck down Roe vs Wade, La Clínica took a stand, releasing a public statement reinforcing our commitment to health care as a human right, including sexual and reproductive health. Watch La Clínica's video that encapsulates our Reproductive Justice in Action, and how we serve hundreds of women each year.



Patient Committee

In 2022, our 28-member Patient Advisory Committee met regularly with our Executive Director and Health Equity team. The Committee includes patients, health promoters, and program participants. They drive community engagement, advocate for policy improvements, and prioritize the patient perspective.

HIV Workforce Team

La Clínica's HIV Workforce Team focused in on improved workflows which led to reporting a 100% rate of patients linked to care in under 30 days. (77% of patients were linked to care in under 2 weeks and 60% in under a week). La Clínica continues to lead in HIV prevention and treatment.



**LET'S STOP
HIV
TOGETHER**



Staff Retreat

La Clínica's staff enjoyed the first staff retreat in 3 years at Sandy Point Park. We celebrated staff who reached 5, 10, 15, and 20 years of work at La Clínica, many who began as volunteers, health promoters, and clients! In 2022, we welcomed 35 new staff, each with a strong commitment to serving Latinx communities.

Policy Victories

Our coalition participation led to significant victories for Health Equity. In DC, a key barrier in the DC Alliance Healthcare recertification process was removed. In MD, the campaign for expanded healthcare coverage won passage of the Healthy Babies Equity Act, extending Medicaid to mothers and newborns regardless of immigration status.

Substance Use and Mental Health

Volviendo a Vivir's (VAV) intake process moved to La Clínica from the Department of Behavioral Health. This has resulted in an improved system and ability to better serve the needs of each client. Already our client numbers have doubled in 2023. VAV remains one of the only bilingual and culturally appropriate substance use programs in DC.



IMPACT



10,684
Medical Services
provided



4,879
Mental Health
Services provided



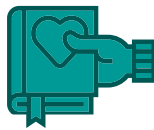
5,158
Substance use
outpatient services
provided



12,814
Telehealth services
vs 11,688 in person
clinical services



6,286
Medical
Interpretations and
Navigations provided



7,640
Client encounters
through health
education



2,595
Enabling Case
Management
Services



209
Students receiving
mental health
services through Mi
Refugio



2,516
Cancer Screenings



1,456
Reproductive
Services provided



3,078
HIV and STI tests
provided



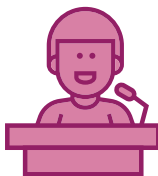
100%
of newly diagnosed HIV
positive individuals
linked to care



91%
Of patients identify
as Latino



89%
of patients prefer
other language than
English



11
Testimonies by staff and
community members in
local councils



58
Health Promoters
Trained

EVENTS



3rd WALK-A-THON FOR HEALTH

We were thrilled to see a sea of green shirts as La Clínica staff, patients, community members, partners and supporters came together, walking for health equity. Our community walked more than 38 million steps from March – April. Spoiler alert, in 2023 we walked 57 million steps! Let's see what our feet and hearts can do in 2024.



CHA SUMMIT 2022

2022 Community Health Action Summit “The Role of Innovation and Research in Advancing Community Health” – In October, 80 partner agencies and 220 individuals participated in a 2-day summit hosted by our Community Health Action Department. Providers and partner agencies shared how the use of innovation and research contributes to improving community health. All participants learned through group discussions, capacity building workshops, virtual discussion booths, and networking opportunities.



7TH ANNUAL CASINO NIGHT

For seven years, Flock DC raised essential funds with La Clínica through an annual pop-up Casino event totaling more than \$260,000! Additionally, their staff provided 700+ volunteer hours in that time resulting in a deeply interwoven partnership centered on positively impacting the health of our communities.



LA POSADA

In December, La Clínica’s traditional “La Posada” holiday event and gift give-away provides hundreds of families with holiday gifts and the opportunity to celebrate culture, community, and belonging. Thank you to All Souls Church for hosting this magical event and to the individuals and businesses that distributed more than 400 gifts and books to our patient families.



PARTNERSHIPS

Lessons learned from our five-year MERCK Bridging the Gap initiative leveraged La Clínica for funding through Maryland's Community Health Resource Commission's (CHRC) Pathway to Health Equity. Through this new \$1.5 million two year grant we are implementing the diabetes management and model of care learned through our MERCK demonstration project. These partnerships allow La Clínica to continue strengthening its model of care delivery and address system-level issues impacting the health of Latinx communities.

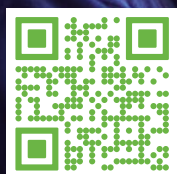


INNOVATION

La Clínica is leading a cross-sectoral coalition to address social determinants of health including food insecurity and immigration status, to improve health outcomes for low-income Limited English Proficient immigrant Latinx individuals who have been diagnosed with diabetes or are at-risk for diabetes. This innovative model is inclusive of primary and specialty care, wrap around support services, comprehensive health education/outreach, and advocacy for the uninsured Latinx community. Our key partners are Ayuda, Luminis Health, and Crossroads Community Food Network.



SCAN TO READ PAPER

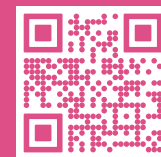


FUNDING MODEL

Financially sustaining a model that has strong outcomes requires mixed funding from public and private sources. In a recent paper (scan QR code to read) resulting from the MERCK project, it is found Philanthropy has a critical role in supporting system innovation while the public sector catches up in funding.

MEDIA

Articles, Publications, Conferences



Mapping Barriers and Enablers of COVID Vaccine Uptake

"Health departments should prioritize language access and cultural competence when developing educational campaigns;" just one of the recommendations from the community assessment conducted by La Clínica. 673 individuals were surveyed to ensure comprehensive, equitable perspectives in COVID-19 vaccine education and distribution efforts.

International AIDS Conference 2022 Poster Presentation

We presented in the International AIDS Conference 2022 a poster presentation "Only if it was better: Perspectives and Preferences on Long-acting Injectable Antiretroviral Use" that disseminated findings of a Research Partnership with University of North Carolina at Chapel Hill, The Fenway Institute, and the George Washington University.

American Public Health Association

In 2022, La Clínica had two poster sessions accepted at the American Public Health Association (APHA) annual meeting: Transforming Health Information into Action. How to use a health equity perspective to become a health literate organization serving Latinx communities. Mapping Barriers and Enablers of COVID-19 Vaccine Uptake: The Role FQHC's Can play addressing health inequalities in the Latinx Community.

When Access is The Main Barrier

Bessie's Determination to Stay Healthy: Bessie, a sixty-seven-year-old El Salvadoran first-generation immigrant woman, has been a patient of La Clínica's since 1996. She has survived ovarian and breast cancer and lives with diabetes. Like many patients of La Clínica, she has served on La Clínica's Board and provided testimony of her experiences at the city council. Bessie agreed to be interviewed by two La Clínica staff for an article published online on December 1 in the Journal of General Internal Medicine.

Implementing the Partnership Assessment Tool for Health

A recent grantee of the five-year Merck Foundation initiative, Bridging the Gap: Reducing Disparities in Diabetes Care, La Clínica used the Partnership Assessment Tool for Health (PATH) to assess two cross-sector partnerships: a medical-legal partnership with a legal services agency, CARECEN, and a five-year partnership with FRESHFARM focused on alleviating food insecurity. Lessons learned by using PATH are now shared in this most recent Johns Hopkins Press publication.



NEW WAVE OF IMMIGRANTS

In 2022, Texas and Arizona governors transported immigrants in buses to Washington DC. Since 1983, La Clínica has been a trusted, safe, and welcoming space that our immigrant community relies on to provide quality care, and to fight for health, justice, and inclusion. Our next strategic plan, due in November 2023, will center on building community and needed investments.



GROWING NUMBER OF STUDENTS

In 2022, our school-based mental health program, Mi Refugio, grew exponentially following a full year with students back in school. Additionally, Mi Refugio has been a point of entry for many of the newcomers arriving in the DC area. It works to improve the ability of our young high school student participants to cope with their feelings by reframing their experiences in a context that facilitates a healing process and promotes change.



BRIGHT FUTURES

More than 209 students were served in the 2022-2023 school year, and 62 seniors graduated High School in June! For many Mi Refugio students, they have entered the US school system as a high-schooler, speak limited English upon arrival, and have endured challenging and traumatic experiences - Mi Refugio - truly represents a refuge and place where their healing and dreams can take shape.

PARTNERSHIPS

Together, we partner on critical research and data, and demonstration projects that allow us to build upon the works of knowledge around health care access that can shape our model of care and drive our work in public health with Latinx immigrants.



AWARDS

In 2022, La Clínica achieved excellent clinical outcomes and was recognized through a great span of esteemed awards for its leadership, provision of services, and work towards building a healthier community for all.



BOARD OF DIRECTORS

La Clínica is led by a patient-majority Board of Directors who ensure the voice of our community is represented at the highest levels of leadership.



Edgar Jimenez
President



Elizabeth Ortiz
Vice President



Gerardo Portillo
Treasurer



Adriana Velasquez
Secretary
Jan - Aug



Salome Martinez
Secretary
Sep- Dec



Ana Rodriguez
At Large - Patient



Brizeida Santos
At Large - Patient



Haylin Lovo
At Large - Patient



Luis Angelo Gomez
At Large - Patient



Paula Vasquez
At Large - Patient



Veronica Vela
At Large



William Escalona
At Large - Patient

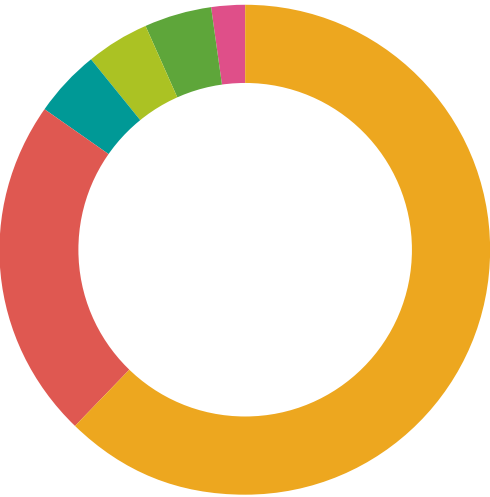
We thank our board members for their leadership and unwavering commitment during 2022.

FINANCIAL HIGHLIGHTS

REVENUE DISTRIBUTION

58%	GOVERNMENT GRANTS AND CONTRACTS
2021	2022
\$10,067,543	\$9,433,451
21%	EARNED INCOME
2021	2022
\$3,619,724	\$3,358,514
4%	FOUNDATIONS AND LOCAL GRANTS
2021	2022
\$1,610,132	\$732,079
10%	OTHER INCOME
2021	2022
\$1,699,230	\$1,753,480
4%	INDIVIDUAL CONTRIBUTIONS
2021	2022
\$674,810	\$705,447
2%	IN-KIND INCOME
2021	2022
\$134,423	\$309,257
INVESTMENT INCOME	
2021	2022
\$351	\$17,592

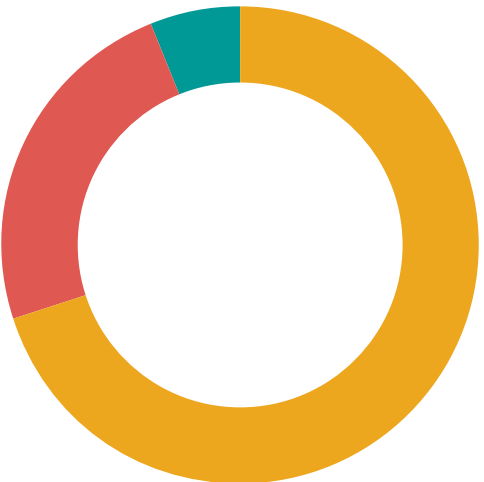
REVENUE 2022
\$16,309,820



EXPENSES DISTRIBUTION

71%	DIRECT SERVICES AND PROGRAMS
2021	2022
\$9,684,202	\$10,775,047
23%	MANAGEMENT, FACILITIES, AND GENERAL
2021	2022
\$3,210,782	\$3,650,264
6%	DEVELOPMENT, FUNDRAISING, AND COMMUNICATIONS
2021	2022
\$774,468	\$941,805

EXPENSES 2022
\$15,367,116



TOTAL	2020	2021	2022
REVENUE	\$15,601,907	\$17,806,213	\$16,309,820
EXPENSES	\$13,653,124	\$13,669,452	\$15,367,116

DONORS 2022

La Clínica relies heavily on philanthropy to fuel its mission. We are grateful for the diverse group of supporters who continue to support our work, and for those who joined us in 2022, with commitments towards building healthier and more inclusive communities. We would like to recognize the following individuals, funding partners, foundations, associations, and businesses.

Private Foundations, Corporate, and Public Partners

A. James and Alice B. Clark Foundation
American Association of Medical Colleges
AmeriHealth Caritas District of Columbia
Bank of America Charitable Foundation
District of Columbia Department of Behavioral Health
District of Columbia Department of Health
District of Columbia Mayor's Office of Latino Affairs
District of Columbia Office of Victim Services and Justice Grants
District of Columbia Primary Care Association
George Washington University
Institute for Public Health Innovation
Inter-American Development Bank
Luminus Health
Mars Foundation
Maryland Community Health Resources Commission
Maryland Department of Health Office of Minority Health and Health Disparities
Maximus Foundation
Merck Foundation
Miller Chevalier Charitable Foundation
National Alliance for Hispanic Health
Nora Roberts Foundation
Open Society Foundation
Planned Parenthood of the Metropolitan Washington, DC, Inc.
Prince George's County Council
Prince George's County Department of Social Services Community Schools Network
Prince George's County Executive Office
Prince George's County Health Department
Robert Wood Johnson Foundation
President's Grant Fund of the Princeton Area Community Foundation
The Alexander and Margaret Stewart Trust
The Charles and Mary Latham Fund
The Morningstar Foundation
The Morris and Gwendolyn Cafritz Foundation
The United States Department of Health and Human Services (HHS)
The United States Department of Health and Human Services: Centers for Disease Control and Prevention (CDC)
The United States Department of Health and Human Services: Substance Abuse and Mental Health Services Administration((SAMHSA)
Theodore H. Barth Foundation
UnidosUS
United States Department of Justice Office on Violence Against Women
Unity Health
University of Michigan
Venable Foundation
Washington AIDS Partnership

Organizations and Corporations

All Souls Church Unitarian
Amazon Smile Foundation
America's Charities
Bates White
Boeing Employee Community Fund
Creative Associates International
Crowell and Moring
Give Lively
Impact Assets
KPMG Washington Foundation
MESH Charities
NVG LLC
River Road Unitarian Universalist Congregation
Schmidt Public Affairs
Target Employee Fund
The Software Alliance
United Way of the National Capital Area
Verizon
World Bank Community Connections Fund
Wynne Health Group LLC

Event Sponsors

AARP DC
AIM Commercial
Beau Thai
Built By Bennett
Carefirst Bluecross Blueshield
Colin Kimpel, Wealth Insight Partners
Community IT Innovators
Eagle Bank
Flock DC
Giant Food
Gilead Sciences
Gloria's Maid Services
Graham Holdings
HJWC Group at Compass Real Estate
Kaiser Permanente Foundation
Keyed In
Maggio Roofing
MarshMMA
Medly Health Inc
Moya Design Partners
NCB Capital Impact
National Consumer Cooperative Bank
NFP
RingCentral
The Exterior Medics Family Theory
Toni Ghazi
Wayne Hosking CSG Construction Systems Group
Wealth Insight Partners
Whiteford Taylor Preston

Individuals & Family Foundations (\$1,000+)

Alexander Brady Foundation
Alicia Wilson and Susan Guardado
Ana Rodriguez
Anonymous Patient
Ben Gitterman
Bickley Wilson and Robert Chipman
Bob Bonner and Laurie Lester
Bridgette and Matt Kaiser
Carlos O'Bryan and Maria Arizmendi *
Carolyn Andrews
Carolyn M. Parr
Catalina Sol
Charlotte Jones-Carroll
Daniel Blaine
David LaRoche*
Dorothy Pohlman
Edgar Jimenez and Camila Lorca Jimenez
Elizabeth and Stanley Salett
Ella Curry
Ella Latham Fund
Evelyn Jacob and Bruce Davis
Frank Sheed
Gerardo Portillo
Ginette Michaud
Glen E Parker
Helga Sol*
Henry Horsey and Svetlana Gromova
Jack Hoadley and Beth Fuchs
Jane Thompson and John Kaelin
Janet Lowenthal
Jessie Harris and Woody Cunningham
John Hammond
Kaiser Family Foundation
Karen Pollitz and David Airozo
Karin and Greg Werner
Kateri Conahey
Katherine Johnson
Kim Green
Leslie Case
Lief Doerring
Lindsay Coates*
Lisa Wheaton*
lisa wise and Cameron Cohen*
Live to Give Equity and Justice Fund
Lucas and Judith Blanco
Lynne and Joseph Horning
Marcia Bernbaum
Maria Cecilia Zea
Mateo Cummings
Matthew and Gail Jenkins
Matthew Hanson and Ana Garcia*
Melinda Altschul
National Philanthropic Trust
Nils Franco*
Noel McCaman and Mary Ann Pryor
Peggy Sand*
Rebecca and Richard Werner
Robert Free
Sarah Coviello
Share Fund
Smith Williams
Sophia Sahaf
Split Rock Charitable Foundation
Stephen Charles and Janice Hazlehurst
Veronica Vela*
Vic Basile and Fabrizio Claudio
Virginia Schofield and Peter Hakim

Individuals (\$100-\$999)

Aaron Knight and Kim Adler
Abel Nunez Aguilar and Diana Guelespe*
Adrian Becher
Aidan and Kathleen Dellert Jones
Aileen Ma
Aimee and Abel Olivo*
Albert Kramer and Ruth Jaeger
Alexis Stoumbelis
Alice Litwinowicz
Alicia Juarrero*
Alison Scimeca
Alix Ganga
Allan and Adela Jimenez
Amy Madigan
Ana Maria del Rio Gonzalez*
Ana Maria Oviedo Silva
André Lee
Andrea Littell*
Andrea Thoumi*
Andrea Ward
Andrew Klein
Andrew Schuster
Angela Suarez*
Ann and Frank Winston
Ann Chavez
Ann Ingram
Anna Jeide-Detweiler and Nathan Detweiler*
Anna Saavedra
Anne Sherow
Ariel and Rachel Levinson-Waldman
Ariel Shaw
Arielle Koreyasu
Armando Almanza
Arun Ivatury
Asila Calhoun
Barbara Elkus
Barbara Geiser
Barbara Henins
Belen Hurler*
Ben Berkow
Ben Wolfert
Beth Jacob
Beth Kuzmyak
Brandon Wu
Brandy Bauer*
Brenda Segel
Brian Hopman
Briana Wilson
Camille Espinoza*
Camilo Vargas-Cabrera
Carla Maenza
Carla Violet
Carlos and Delia Naranjo
Carlos and Rita Cuellar
Carlos Martinez
Carlos Perez Brito
Carlos Rodriguez-Castelan
Carlos Rodriguez-Diaz
Carol Fuller
Carol Wolchok
Caroline Hanson
Carrie Wolfson*
Catherine Stolar*
Cathy Chirikjian
Cathy Hurwit
Cecilia Briceno-Garmendia
Cecilia Ramirez
Charles Feinson
Charles Roberts
Chelsey Kelly
Chris Wieman
Christian Salas
Christina Nichols
Christine Doyle and William Schwartz
Christine Miller

Christine Talman Cohen
Christopher Hartmann
Christopher Wagner
Cindy and Ray Wilson
Colin and Susanna Emmet Stewart
Connie Wilkinson and Jose Gonzalez
Conor McGrath
Coreen Harney
Corinne Schultz
Cristiane Kimura*
Dana Martin
Daniel Mata*
Daniela Rempell
Dave Scherler
David and Mary Ryner*
David Block
Dawn Fishbein
Denise Mayotte and Warren Hanson*
Dennis Alloy
Diana and Christopher Reed
Dina Levy
Djoudie Etoundi*
Don Plank
Donald Hayward*
Donna Afshar
Donna Ramos-Johnson
Duncan McHale
Edward and Mary Levy
Elaine Cohen
Eleanor Gease
Eliza Barclay
Elizabeth Agle
Elizabeth Cohn and Judith Applebaum
Elizabeth Hilder and Randy Smith
Elizabeth Jenkins-Joffe
Elyse and Sharon Summers Metro
Emily and Jack McKay
Emily England
Emily Kugler*
Emma Staller*
Eric Hershberg
Eric Trouton
Ericka Taylor
Erin Frager
Eser Yildirim
Evelyn and Bob Wrin
Ezra Vazquez-D'Amico
Fabiana Cuellar and Santiago Diaz*
Faraji Whalen-Robinson
Faraz Usmani*
Fernando Blanco Cossio
Francesca Lamanna
Frank Spector
Fred and Christine Hill
Gabby Majewski
Gabriel Thoumi
Gabriela Stocks
Gisele Youmbi
H. Heather Shaner, Esq.
Hallie Cohen
Harvey and Alice Galper
Hazel Denton
Heather Foote
Heathyr Langdon
Helen Burstin
Hila Berl*
Hilary Lewis
Howard Cohen
Ilana Nagib and Kevin Wong*
Ilene Photos
Indra Amaro Gómez*
Inga Smulkstys
Irene N. and Sander Mendelson
Irwin and Verda Deutscher
Isabel Frieden-zohn
Ivania Fernandez
Jaime Willis
James and Marilyn Ungerleider
James Morsink
Jamie Reich

Jan Sinnott
Jane and Whit Gallagher
Jared Royer
Jason Austin
Jayesh Rathod
Jeannette Noltenius
Jenna Smith
Jennie Morris
Jennifer Hermesmeyer
Jennifer Soltesz
Jessica Seidman
Jillian Hall
Jimmy Reid
Joan Evans*
Joanna Shin
Joanne Kinoy and Mark Weber
Joe and Margaret Mary Fleming
Joe Wisniewski
Joel Korn and Susan Bandler
Johanna Miller
Johannes Wehebrink
John and Dolores Hastings
John Duatschek
John Hansman and Jean Hiron
John Meyn
John Tiekling
John Wise
Jonathan Stewart
Jorge Alva Lupe
Jorge Coarasa Bustamante
Jose Carlos Ferreyra
Jose Lacorte*
Jose Leandro*
Joseph Eldridge and Maria Otero
Joshua Kolko
Joshua Malamud
Juan and Ada Cuadrado
Juan Luis Molero
Judith Bauer
Judith Bucci
Julie Coons
Julie Gantz
K. David Meit
Kara-Anne Suvada*
Karen and Steven Smith
Karen Staha
Karyn Pomerantz*
Katherine Jones
Kathleen and Michael Yoder*
Kathleen Mejia
Kathryn and Ramzi Dudum
Katie Cross*
Kellan Baker
Kenneth and Lee Bakalar
Kim Rowsome
Kimberly Ketchoyian
Kreszentia Duer
Kris Aulenbach
Krista Bennett
Kristen and Bruce Jeide
Kristin Davis
Kyrstin Racine*
Lani Crane*
Laura Breeden
Laura Lewis
Laura Trejo
Lenwood McLean
Letitia Gomez
Ligia Medina Williams*
Linda and Kenneth Button
Linda Fink
Linda Kolko
Linda Rosenfeld and Fred Krosner
Lindsay Handelsman
Lizzi Albert*
Locke McCorkle
Lora Ann Sullivan
Louise and Simone Meyer
Lucia and Stephen Effros
Lucia Fort

Lucia Solbes Castro
Lucretia and William Marmon
Lucy Zhang
Luis Gomez
Luis Landau
Luis Morales
Luizilda de Oliveira
Lydia La Motta
Lyn da Tredway
Lyz Ortiz*
Mansur Shomali
Margarita Studemeister and Carlos Vela
Marguerite Barratt
Maria Ibarra Rodriguez
Maria Montalvo
Maria Rodriguez
Maria Zimmitti
Maria-Gloria Elliott*
Marian Licha
Mark and Susan Schneider
Mark Coles
Martin and Anne Rosensky
Mary and Ralph Sustar
Mary Jane Coy
Mary Rieser*
Matthew Siblo*
Mauricio Silva
Meira Neggaz
Melissa Ford
Melissa Mayer*
Melissa Pappas
Meredith Josephs and Matthew Mariani
Michael Bennett
Michael Corlett
Michael Shifter
Michael Stagnitta
Michele Ruta
Monica Villalta
Myles Duffy
Nancy Baillie
Nancy Belden
Naomi Greenwood and Jay Bedell
Naomi Nim
Naseema Shafi
Natasha Bonhomme
Nathaniel and Barbara Baldwin
Nathaniel Sheridan
Nelson Marban
Nicky and Jason Lehming-Gallo
Nicole Hayes*
Nina Goldman
Nina Yamanis
Oscar Flores*
Pamela Boozer-Strother*
Patrice Fletcher
Patricia Griffin
Patricia Macgowan and T. Whittier
Warthin
Patricia Marsland
Patricia Minami
Patrick Flanagan and Carol Reisen
Patrick Langan
Patrick Schwartz
Paul Duran
Paul Frick and Martha Coven
Paul-Jean Le Cannu
Paula Vasquez
Paul-Jean Le Cannu *
Pavan Khoobchandani
Pawla Ghaleb
Pedro Vides
Peter Montgomery
Peter Shields
Philippe and Katherine Villers
Quinta Jurecic
Quince Wu
Rachel and Rafael Ugarte*
Rachel Grinberg

Rahsaan Bernard
Ralph and Claire Dutrow
Raymond White
Rebecca Craig
Rebecca Miskell
Reiko Ishihara-Brito
Robert and Carol Barron
Robert and Marilyn Benson
Robert Crawford
Robert Half
Robert O'Sullivan
Robert Ormsby
Robert Soliz
Robert Vogt
Roberto Echandi
Rosie Fischl
Ryland L. and Mary Louise Mitchell
Saaol Gonzales
Salome Martinez
Sam Ackerman
Samara Gerson
Sara Oswald
Sarah McMeans
Saul Gonzalez
Schuyler Armstrong
Sean Conley
Sharee Hixson
Sherlonda Goode-Jones
Sofia Castillo Morales*
Sofia del Valle*
Stephanie Jaffa*
Stephen Kitchen*
Steve Holman
Steve Lambakis
Susan Carroll
Suyanna and Gary Barker
Tamara Zemlo
Taquienna Boston
Taryn Morrissey
Tasara Redekopp*
Ted Lardner
Teresa Cutolo Piana
Terri Shaw
Terrie Gale and Bob Adler
Thurman Wenzl
Timothy Daniel
Timothy Lee and Amanda Rohn
Todd Devorsetz
Tracy Zorpette
Valerie Kindt
Veronica Vivas
Vicki Fowler
Victor Valle
Victoria Lai
Victoria White
Vivianne Peckham
William Freeman
William F Panici
William Foksett
William Klein
William Trunk
Xiomara Salome Martinez Ascencio
Ysabel McAleer

Names with an asterisk* indicate an Amig@ del Pueblo monthly donor.

**¡GRACIAS!
THANK YOU**

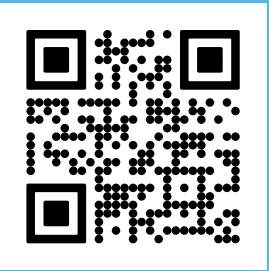
“La Clínica has been a home for me over the past forty years. First as a volunteer medical interpreter, later as a board member, and now I bring together friends for Walk-a-thon and house parties. A lot has changed over the years, but one constant is the trust that my contributions are making a difference.”

-Lisa Wheaton, MD

**VISIT THE
DIGITAL VERSION
OF THIS REPORT**



**SUBSCRIBE
TO OUR
MONTHLY
E-NEWSLETTER**



WAYS TO FURTHER ENGAGE



go to: www.lcdp.org/ways-to-help



www.lcdp.org

